



GRDC FORUM – GRAINS RESEARCH UPDATES

CHARLIE THORN
SENIOR REGIONAL MANAGER WEST



SESSION OUTLINE

- Introduction and Purpose
- 5 year RD&E Overview – Justin Crosby
- 45 minute discussion and feedback
- Introducing the Staff in the western region –Charlie Thorn
- Question, Answer and Feedback to GRDC from the floor
- Thank you and close



GRDC RD&E PLAN 2018-23



GRDC[™]
GRAINS RESEARCH
& DEVELOPMENT
CORPORATION

GRDC RD&E PLAN



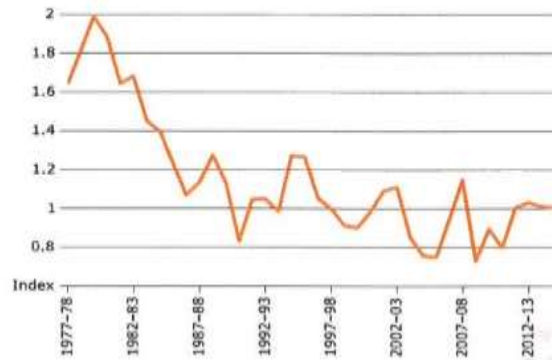
GRDC Purpose:

$$\text{Profit} = (\text{Yield} \times \text{Price} - \text{Cost})^{\text{Risk}}$$



What do we know about now

FIGURE 12 Australian grain farm terms of trade, 1977-78 to 2014-15









Long run trend in real wheat prices (from LMC 2017)

What do we think will happen in the future



Where and how do we invest to create impact

Potential R&D Opportunities	
 Wheat	<ul style="list-style-type: none">• RD&E that maintains alignment between market needs and the functionality of Australian grain.• RD&E that continues to assist end users of Australian grain to maximise opportunities from differentiation on the basis of functionality.• RD&E in crop protection to maintain cleanliness of Australian grains while continuing to meet our reputation for safety.• RD&E to support transport and logistics related policy.
 Barley	<ul style="list-style-type: none">• RD&E that improves grower ability to meet malting segregation requirements.• RD&E in malting processes that expand the range of barley that can be malted for food purposes.• RD&E in crop protection to maintain cleanliness of Australian grains while continuing to meet our reputation for safety.
 Canola	<ul style="list-style-type: none">• RD&E to support potential expansion of canola production.• RD&E to underpin requirements to demonstrate sustainable production.• RD&E to manage the impact of crop diseases on canola production and the requirements of export markets.

Potential R&D Opportunities	
 Pulses	<ul style="list-style-type: none">• RD&E to enable the growth of pulse production.• RD&E to improve efficiency of pulse processing and match functionality with customer demand.
 Sorghum	<ul style="list-style-type: none">• RD&E to improve the functionality of grain types to meet growing feed requirements, such as omega 3 canola for aquaculture.• RD&E to support improvement in the delivery of superior sorghum varieties.
 Other crops	<ul style="list-style-type: none">• Development of individual crop plans for minor crops that maximise profit potential.

FOCUS OF NEW FIVE YEAR STRATEGIC RD&E PLAN

GRDC Purpose:

$$\text{Profit} = (\text{Yield} \times \text{Price} - \text{Cost})^{\text{Risk}}$$

- Creating transformational impact



FOCUS OF NEW FIVE YEAR STRATEGIC RD&E PLAN

GRDC Purpose:

- **Profit = (Yield x Price – Cost)^{Risk}**
- Creating transformational impact
- Higher value opportunities



FOCUS OF NEW FIVE YEAR STRATEGIC RD&E PLAN

GRDC Purpose:

- **Profit = (Yield x Price – Cost)^{Risk}**
- Creating transformational impact
- Higher value opportunities
- Partnering more with non-traditional RD&E providers – need to work with the **world's best**



FOCUS OF NEW FIVE YEAR STRATEGIC RD&E PLAN

GRDC Purpose:

- **Profit = (Yield x Price – Cost)^{Risk}**
- Creating transformational impact
- Higher value opportunities
- Partnering more with non-traditional RD&E providers – need to work with the **world's best**



Next Steps

- Finalise core frameworks
- Refine investment targets
- Plan will be submitted to Government in April

GRDC – WESTERN REGION STAFF



**CONTRACT
ADMINISTRATOR AND
PANEL
SUPPORT**

Jenny Trang
Jenny.Trang@grdc.com.au
P: +61 8 9230 4608



**MANAGER
AGRONOMY,
SOILS, FARMING
SYSTEMS**

**Rowan
Maddern**
Rowan.Maddern@grdc.com.au
M: +61 477 707 255



**MANAGER
AGRONOMY,
SOILS AND
FARMING
SYSTEMS**

Julia Easton
Julia.Easton@grdc.com.au
M: +61 4 2745 1228



**SENIOR
REGIONAL
MANAGER WEST**

Charlie Thorn
Charlie.Thorn@grdc.com.au
M: +61 4 7771 3960



**MANAGER
BUSINESS
DEVELOPMENT
COMMERCIALISATION**

Manjusha Thorpe
Manjusha.Thorpe@grdc.com.au
M: +61 4 0079 8230



**GROWER
RELATIONS
MANAGER
WEST**

Jo Wheeler
Jo.Wheeler@grdc.com.au
M: +61 438 292 167



**CROP
PROTECTION
OFFICER WEST**

**Georgia
Megirian**
Georgia.Megirian@grdc.com.au
M: +61 439 575 900



**BUSINESS
SUPPORT TEAM
LEADER**

**Stephanie
Meikle**
Stephanie.Meikle@grdc.com.au
P: +61 8 9230 4601



**CONTRACT
AND TEAM
ADMINISTRATOR**

**Laura
Baugh**
Laura.Baugh@grdc.com.au
P: +61 8 9230 4605



