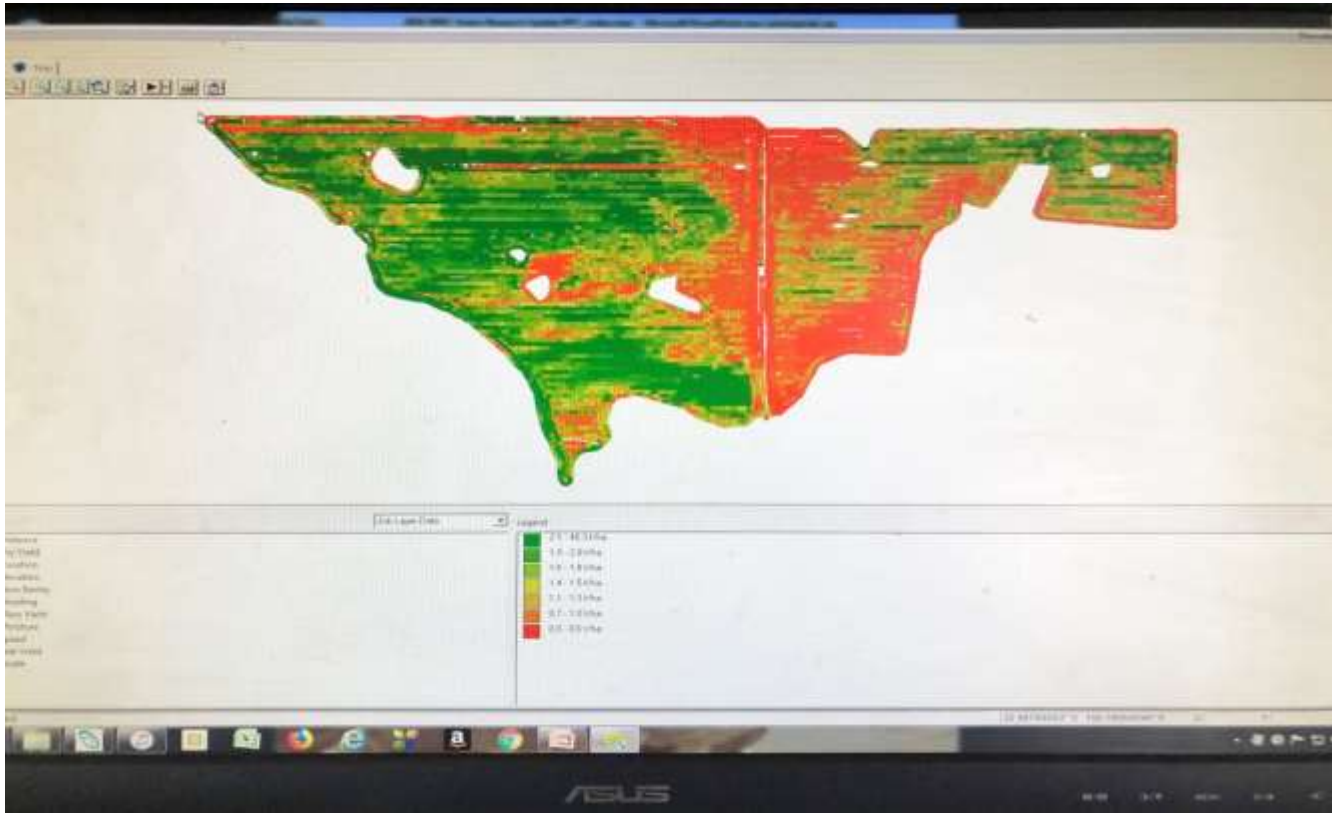


Mark Pearce

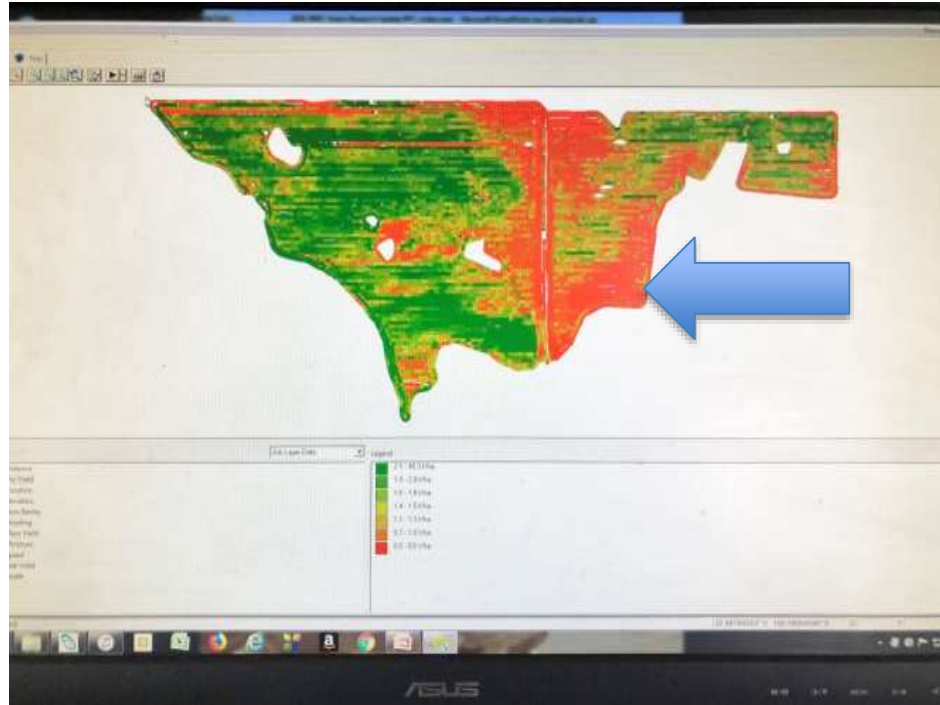
Tarin Rock



Variable soils. Where do we start?



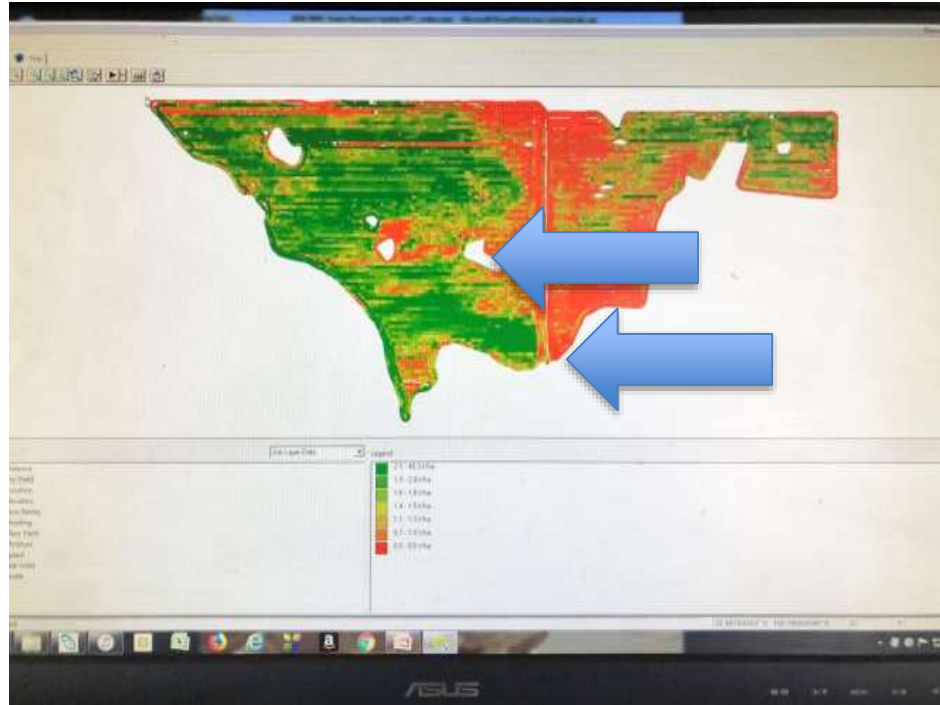
You have got to love ironstone



Shallow ironstone



Breakaways. Not going away in a hurry



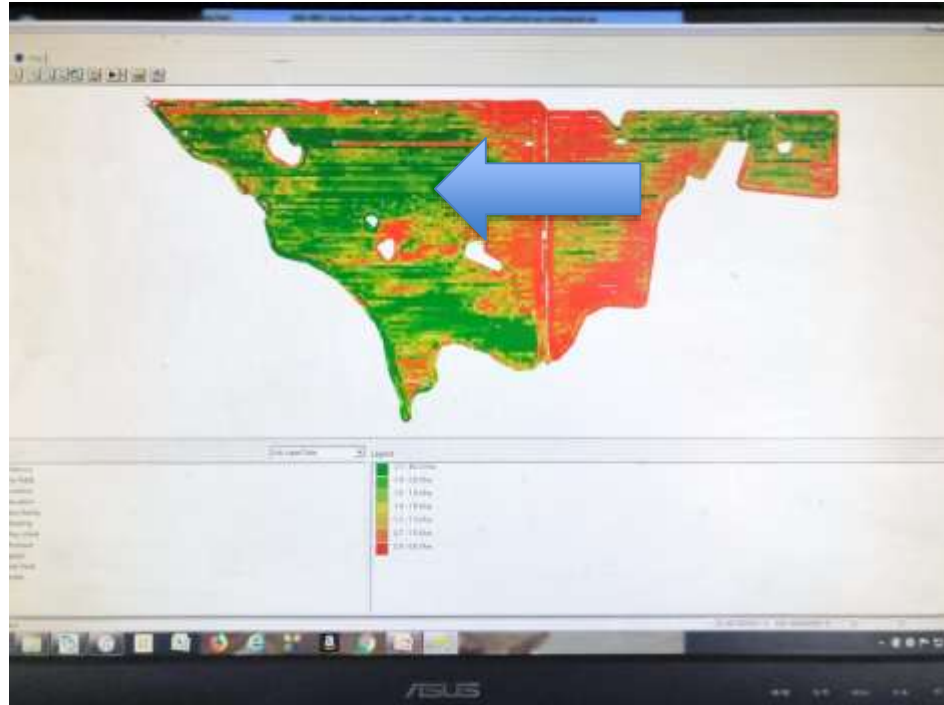
The transition. Ironstone to clay



Chalky clay



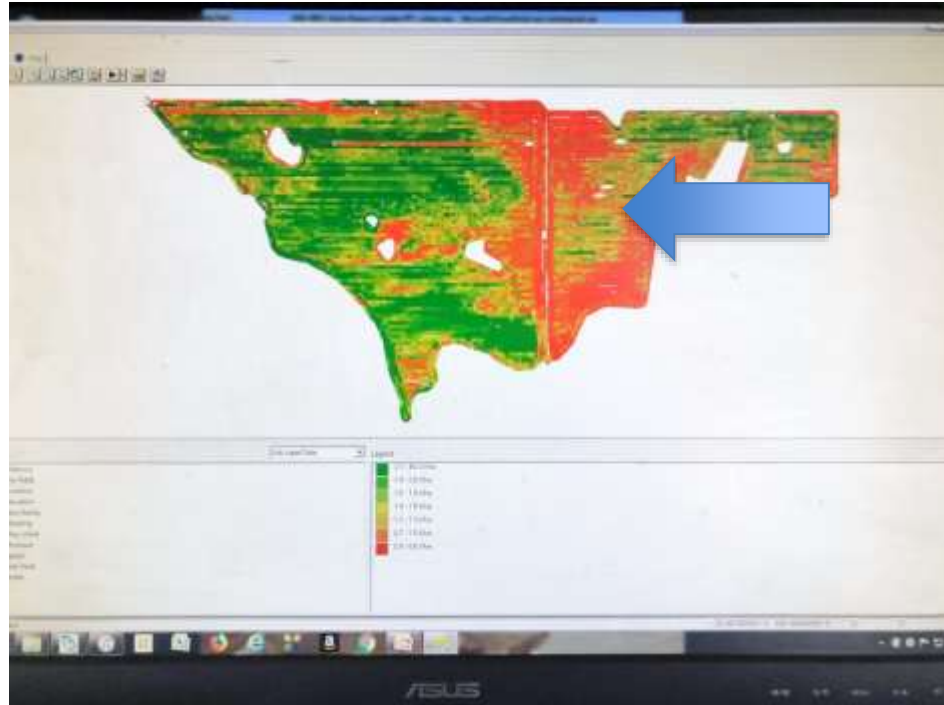
If only there was more



Red clay loam Gods country



Shallow duplex



Dont be confused by the sand on top



Shallow ironstone. Hard to get a good average yield with much of this in the paddock



Reefinited 2018



A definite improvement.

Give it a couple of years and try again



You cant turn a sows ear into a silk purse



Chasing rainbows. Pick your target



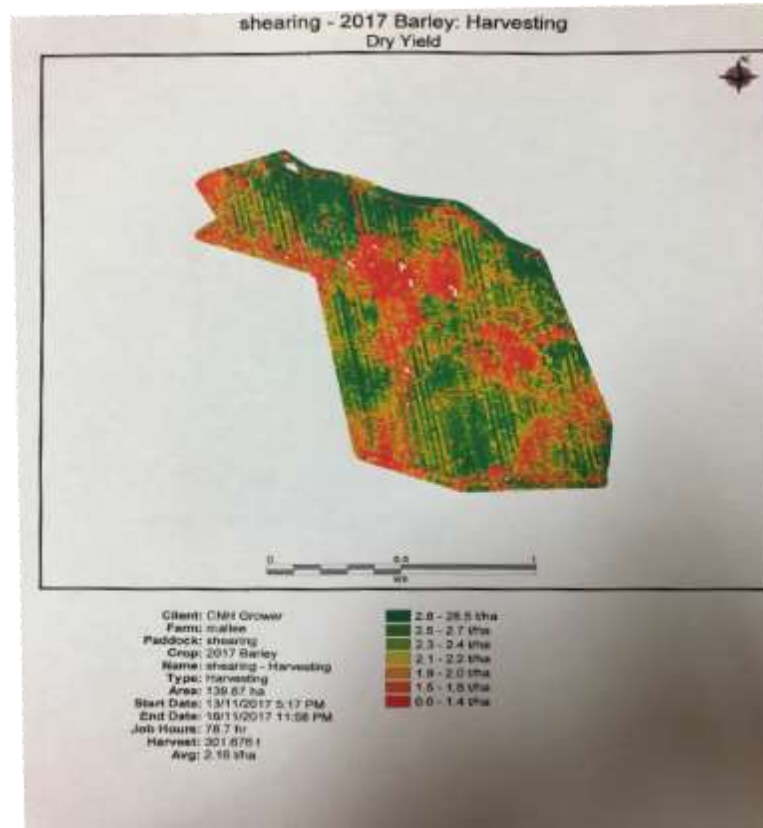
Still not a lot of soil



Canola up and away but its still there



It still shows up



Its not all bad.



Shallow Duplex

Not a lot of rooting depth



A hostile subsoil. No roots down here



Bring on the ripper



It had delving plates



And it had inclusion plates



The finish was very impressive



Still shallow, still clay but there is potential



Use it or loose it



Tillage radish. Worth a try?



Where to from here



Grains Research and Development Corporation (GRDC)

A Level 4, East Building, 4 National Circuit, Barton, ACT 2600 Australia

P PO Box 5367 Kingston, ACT 2604 Australia

T +61 2 6166 4500

F +61 2 6166 4599

www.grdc.com.au

 @thegrdc @GRDCWest #GRDCUpdates

