

# THE INCIDENCE OF FUNGICIDE RESISTANCE IN SPOT FORM NET BLOTCH (SFNB) AND ITS IMPLICATIONS

FRAN LOPEZ-RUIZ



**GRDC**  
GRAINS RESEARCH  
& DEVELOPMENT  
CORPORATION

# BOOM AND BUST CYCLE OF AWARENESS



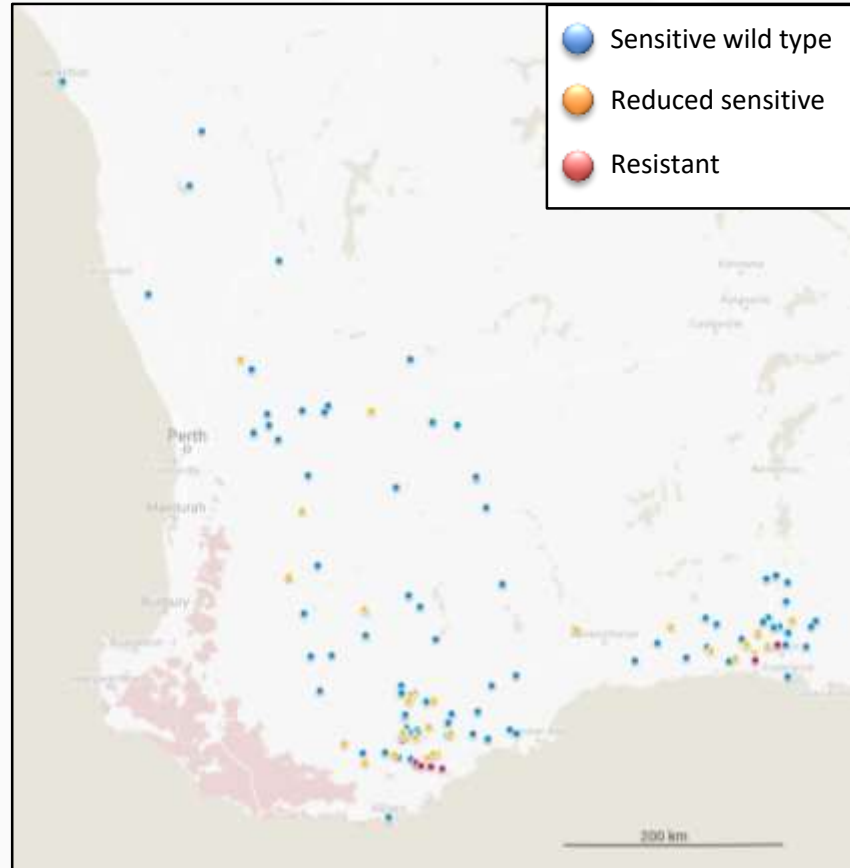
# MEET THE HIGHLY RESISTANT SFNB



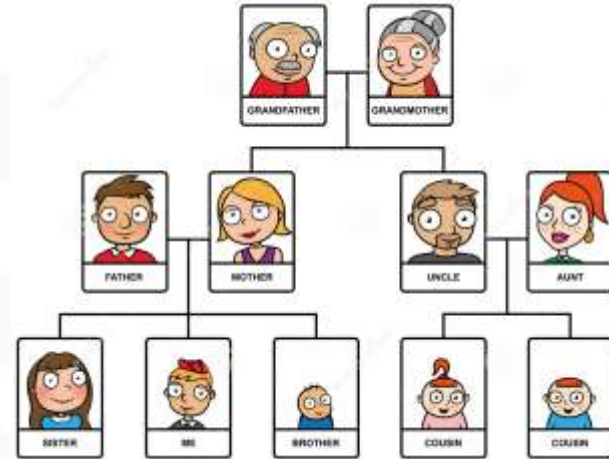
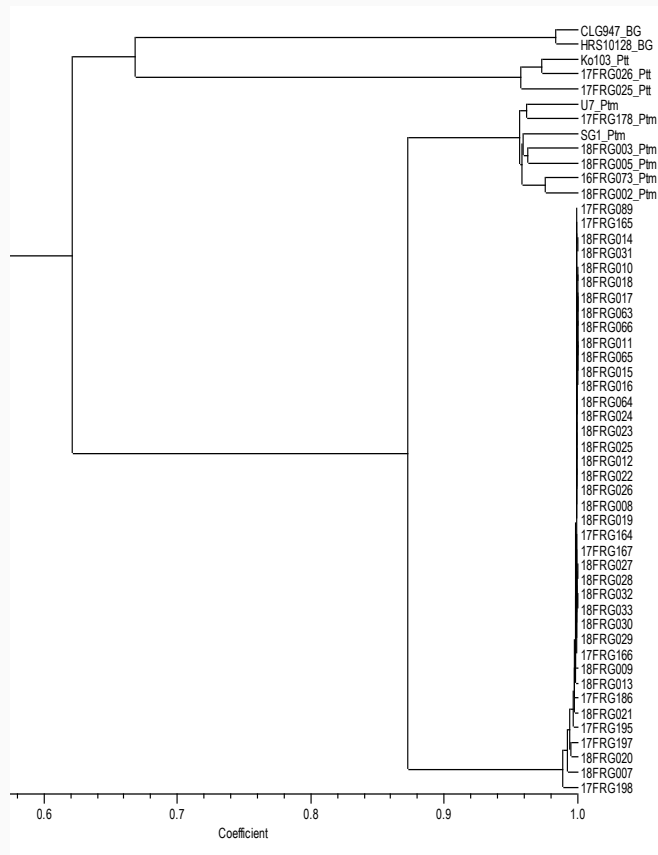
Courtesy of Kith Jayasena and Geoff Thomas, DPIRD, Perth

Fungicide	In vitro sensitivity and Resistance Factor		
	Sensitive	Moderately R	Highly R
Propiconazole	0.16	0.46 (2.9)	6.8 (43.2)
Epoxiconazole	0.17	1.72 (10.6)	1.45 (8.9)
Prothioconazole	0.07	0.49 (6.8)	1.67 (22.9)
Tebuconazole	0.31	2.56 (8.6)	16.69 (55.9)

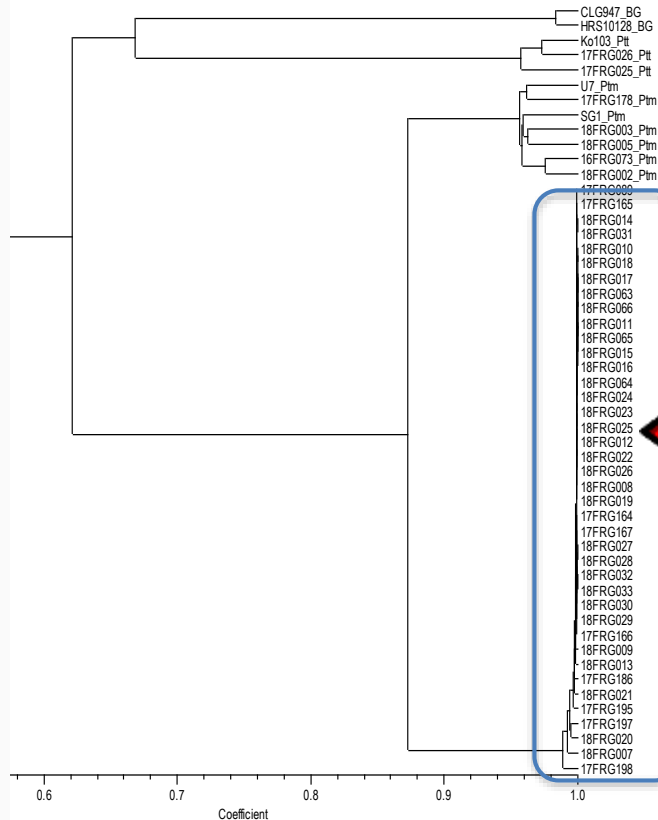
# DISTRIBUTION OF DMI-RESISTANT SFNB IN WA



# WHERE DOES IT COME FROM?

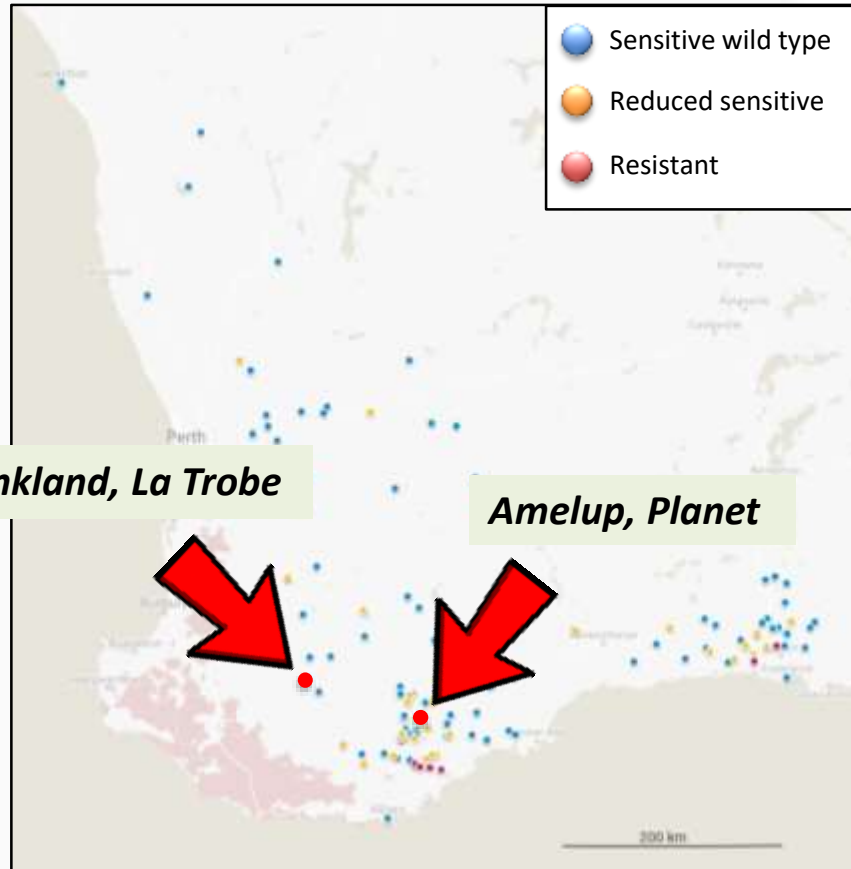


# WHERE DOES IT COME FROM?



- The resistant population is clonal

# THE OXFORD APOCALYPSE?



- Up until last week every HR strain had been isolated from Oxford



# DID WE REALLY SORT IT OUT???

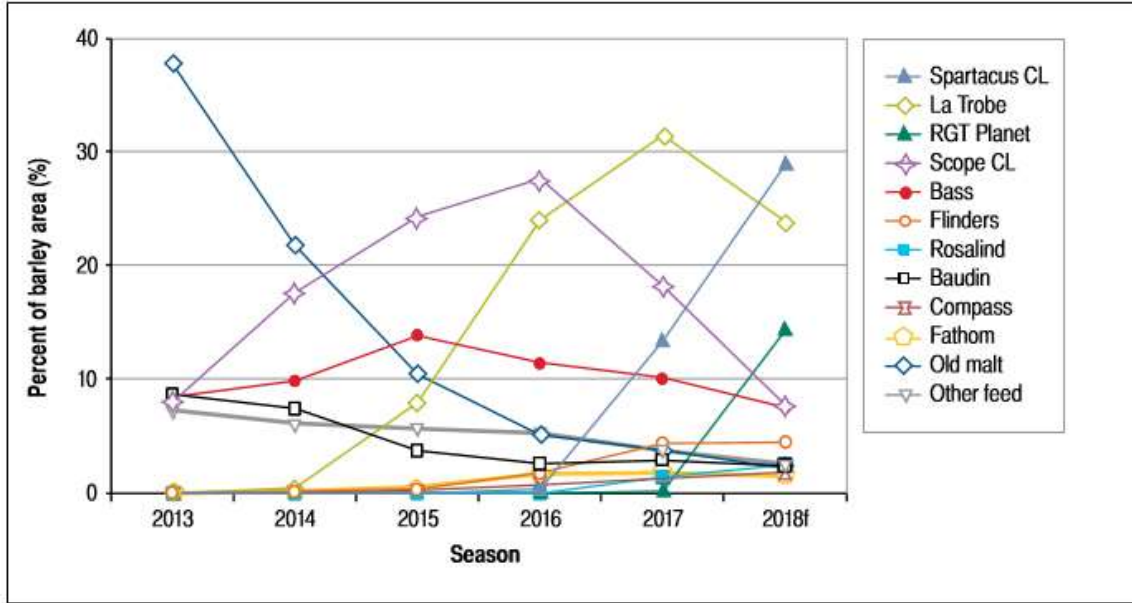
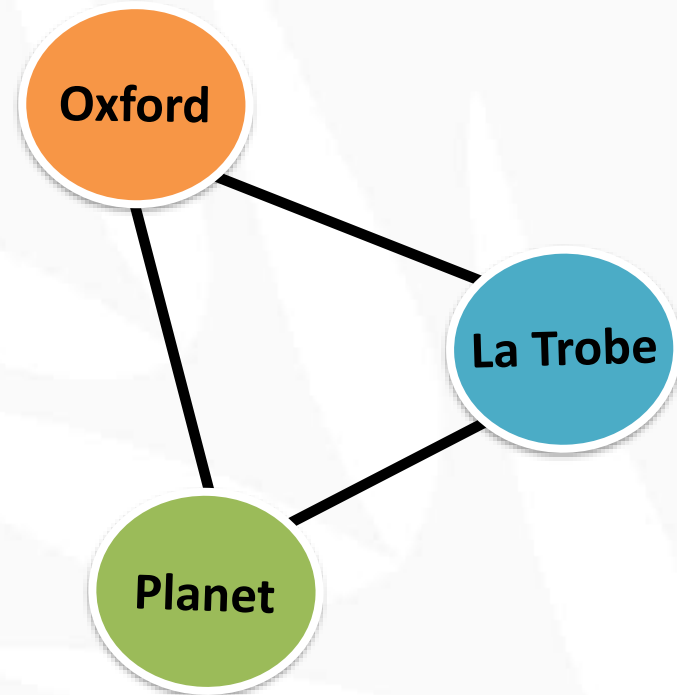


Figure 1 Popularity (per cent of barley area) of top 10 barley varieties (ranking based on forecast area sown in 2018 season) grown in WA over the last five seasons plus forecast for the 2018 season. "Old" malt includes Buloke, Commander, Gairdner, Hamelin, Stirling and Vlamingh. (source: figure based on grower estimates as provided to CBH for 2013-2017 and forecast area for 2018 estimated by Blakely Paynter, DPIRD)





# CHEMICAL MANAGEMENT TIPS

- Only spray if necessary - **limit applications**
- Choose mixtures with **different modes of action** (if available)
- Never apply the same Group 3 fungicide twice in a row: **alternate sprays**
- Avoid using tebuconazole as a stand-alone product in barley for any disease to **avoid indirect fungicide resistance selection**
- Using **Groups 7 and 11** non stop is not a solution!!!
- Use fungicides **before wide infection**
- Do not compromise effective control - **stay within label rates**
- **Test your samples!**



# ACKNOWLEDGEMENTS



## The Fungicide Resistance Group Centre for Crop and Disease Management



### FAR Australia

Nick Poole  
Tracey Wylie

### Computational & Systems Biology

Rothamsted Research, UK  
Frank Van Den Bosch

### Marcroft grains pathology

Steve Marcroft

### Institute of Life Science

Swansea University, UK  
Jonathan Mullins

### Plant Breeding Institute

The University of Sydney  
Robert Park  
Will Cuddy

### Horticulture Pathology

SARDI  
Barbara Hall  
Suzanne McKay

### Cereal Pathology

SARDI  
Hugh Wallwork

### School of BioSciences

University of Melbourne  
Angela Van de Wouw  
Alexander Idnurm

### Agriculture Victoria

Mark McLean  
Grant Hollaway

## Collaborating Companies



Dow AgroSciences

### CCDM

Curtin University

CUR00022

CUR00023

SAR1204

CUR00016

### DPIRD

Geoff Thomas  
Andrea Hills  
Kith Jayasena

DAW00229

### Farmanco

Brent Pritchard

Visit the FRG webpage for more info:

[www.ccdm.com.au/FRG](http://www.ccdm.com.au/FRG)



**GRDC**  
GRAINS RESEARCH  
& DEVELOPMENT  
CORPORATION

Wine  
Australia

Research,  
Development  
and Extension



Curtin University

Grains Research and Development Corporation (GRDC)

A Suite 5, 2A Brodie Hall Drive, Bentley, WA 6102 Australia

P PO Box 5367 Kingston, ACT 2604 Australia

T +61 8 9230 4600

[www.grdc.com.au](http://www.grdc.com.au)

 @thegrdc

@GRDCWest

#GRDCUpdates

 @theGRDC