



GIWA Crop Report

October 8 2010

WA Production estimate- tonnes

Port zone	Wheat	Barley	Canola	Oats	Lupins	Field pea	
Kwinana	1,559,000	345,000	169,000	75,000	84,000	6,000	
Albany	770,000	504,000	292,000	77,000	15,000	9,000	
Esperance	785,000	530,000	256,000	4,000	23,000	64,000	
Geraldton	818,000	42,000	56,000	3,000	168,000	400	
Totals	3,932,000	1,421,000	773,000	159,000	290,000	79,400	6,654,400

WA Yield estimate- tonnes/hectare

Port zone	Wheat	Barley	Canola	Oats	Lupins	Field pea
Kwinana	0.78	0.92	0.65	0.88	0.54	0.58
Albany	1.00	1.21	0.88	1.28	0.54	0.68
Esperance	1.82	1.89	1.38	1.14	1.21	1.28
Geraldton	1.11	1.06	0.68	0.72	0.96	0.67

Production commentary

The total state yield estimate has declined further with no significant rain over most of the wheatbelt during September. The 2010 harvest for WA is predicted to be the lowest in 40 years.

While yield potential is known to be poor, an unknown factor is grain quality. Protein is likely to be high but hectolitre weight and screenings may cause issues for end users. The oil percentage of Canola may also be lower than in previous years.

Rising domestic demand for oats and lupins will limit deliveries for export where on-farm storage is available.

Geraldton

The West Midlands area has lost yield potential for wheat. Quality is a concern with later maturing varieties only at half grain fill.

Barley is filling grain well where it was planted early, but is weak on shallow soils and deep sands. Malt quality is achievable for this area.

Canola potential continues to decline. Aphids are attacking weakened plants exacerbating the problem.

Lupins in the west Midlands are reasonable. In eastern areas, yields will be poor. Field peas look good but similarly do not have many pods per plant.

In the northern areas, all crops are near maturity and harvest will start very soon. Swathing of canola is almost complete north of Mingenew. Crop yields are expected to be slightly below average.

Kwinana

Generally, crop potential has continued to decline with a marked lowering of expectation in the western half of the zone. Crops from Northam south to Pingelly are showing signs of haying off and reduced yield potential.

Some wheat crops are developing grain while still in the 'boot' stage but could still be viable to harvest.

In the eastern half, yield potential has been very low for some time. The situation hasn't changed in the last month.

Albany

A combination of low soil moisture and high spring temperatures has caused a large reduction in yield potential throughout the Albany zone. Oats is suffering more than wheat and barley. Canola is aborting pods in the worst affected crops.

While some canola crops have been cut for fodder, the number is small and therefore should not impact significantly on grain deliveries. Further rain for barley, oats, canola and lupins will be of little use but wheat could still improve IF it rains in the very near future.

Esperance

Wheat development is slower than barley across the Esperance zone and may impact on quality if forecast hot weather affects development in October. Barley grain development is further advanced and quality is promising. Canola yields generally will be good, but aphids, DBM and budworm need to be controlled.

Crop Condition report

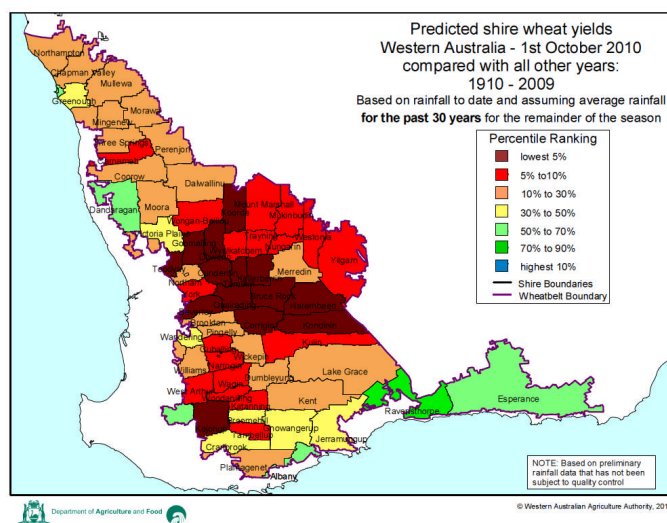
The crop condition report is an estimate of the crop conditions at October 7 across the four port zones as advised by experienced agronomists based in each zone. It is a snapshot of the current condition of crops and does not take account of weather forecasts. The WA total is weighted against the proportion of grain produced in each zone.

WA Crop Conditions – weighted by the production average for each zone

Port zone	Very Poor	Poor	Average	Good	Excellent
Kwinana	77	23	0	0	0
Albany	35	40	19	5	1
Esperance	0	5	18	63	14
Geraldton	38	42	20	0	0
State ave- weighted	41	26	12	17	4

Additional information can be sourced from:

- [BoM rainfall deciles for WA September 2010](#)
- [BoM rainfall deciles for WA July to September 2010](#)
- [DAFWA predicted shire wheat yields October 2010](#)



Disclaimer: The information herein has been obtained from sources considered reliable but its accuracy and completeness cannot be guaranteed. Any advice has been prepared without taking into account specific objectives, financial situation or needs. No liability or responsibility is accepted for any errors or for any negligence, omissions in the contents, default or lack of care for any loss or damage whatsoever that may arise from actions based on any material contained in this publication. Readers who act on this information do so at their own risk. Consult your adviser before making crop, marketing or investment decisions.

Mission: "To identify issues, develop policy and communicate solutions for the WA grain supply chain"