

GIWA Crop Report

April 26, 2012

WA pre-planting estimates- hectares

Port zone	Wheat	Barley	Canola	Oats	Lupins	Field pea	State total
Kwinana	2,450,000	450,000	300,000	110,000	95,000	5,000	
Albany	675,000	350,000	230,000	85,000	20,000	5,000	
Esperance	450,000	280,000	225,000	4,000	15,000	40,000	
Geraldton	950,000	30,000	160,000	5,000	160,000	1,000	
Totals	4,525,000	1,110,000	915,000	204,000	290,000	51,000	7,095,000
<i>2011</i>	<i>4,501,000</i>	<i>1,098,000</i>	<i>749,000</i>	<i>197,000</i>	<i>333,000</i>	<i>60,000</i>	<i>6,938,000</i>

WA 5 year grain production to 2010/11

	Wheat	Barley	Canola	Oats	Lupins	Field pea
Production (t)	6,468,000	2,335,000	813,000	526,000	516,000	61,000
Yield (t/ha)	1.43	1.78	1.02	2.01	1.01	0.90

Source: ABARES Crop Report February 2012

Key trends in the start up of crop planting in Western Australia for season 2012 are:

- Breakeven yields in 2012, on current price forecasts, are much higher for cereals and lupins than for canola. It is therefore expected that there will be a rise in canola plantings, compared to areas planted to cereals and particularly lupins. Paddocks that were fallowed in 2011 will mainly go into canola.
- Barley plantings are expected to favour feed varieties over malt varieties in the Albany and Esperance Port zones.
- The indications are that the overall area sown to crops in 2012 will only be marginally greater than in 2011.

Kwinana: Soil moisture is patchy across the Kwinana zone. Canola plantings will increase at the expense of lupins. Dry sowing of canola and wheat will commence shortly in paddocks with low weed burdens.

Albany: Soil moisture is good in Central districts and the Lakes district of the Albany zone. Canola plantings will increase. The area planted to barley will rise slightly, while the area planted to wheat will fall slightly. Field pea plantings will also decline.

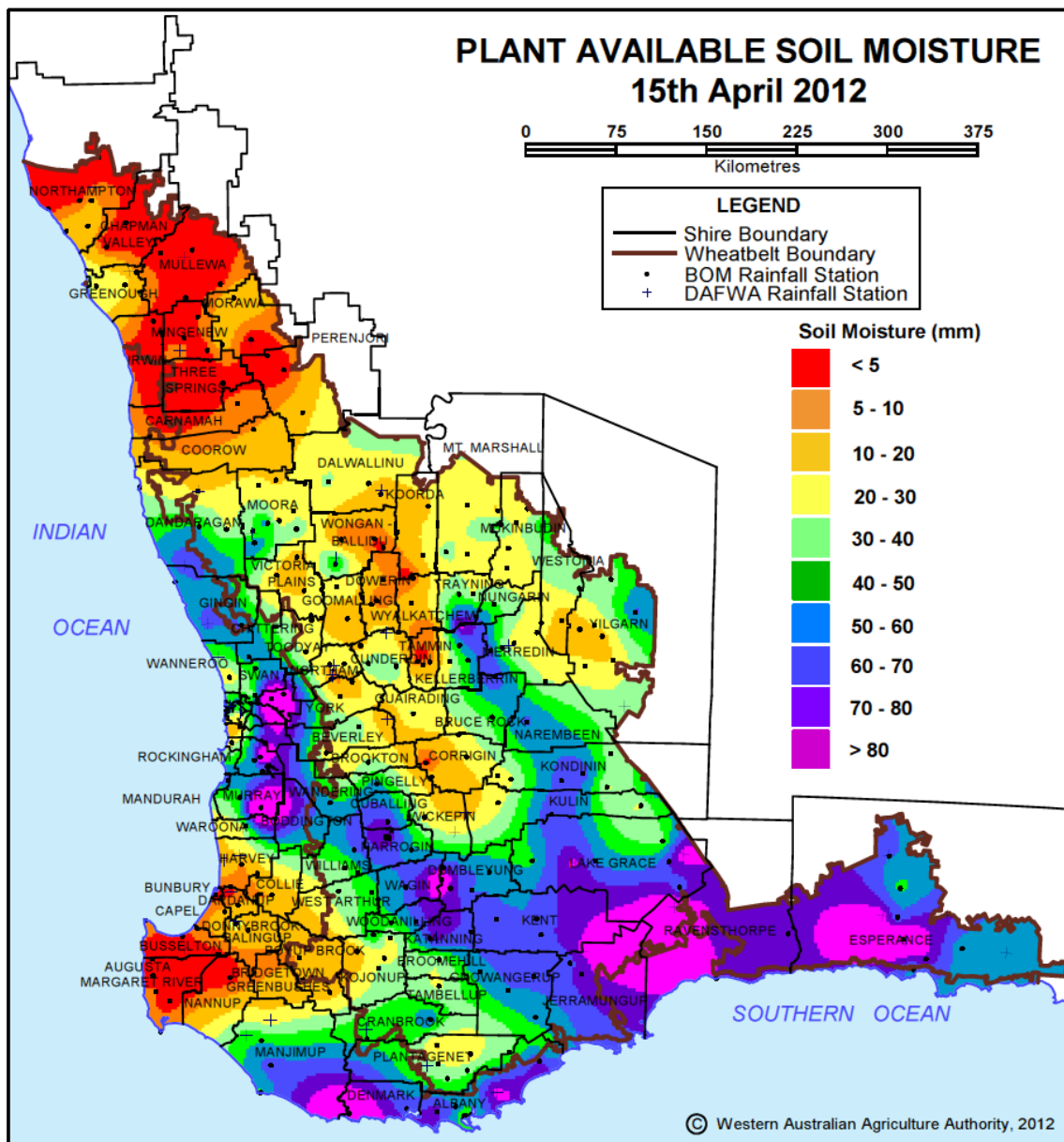
Esperance: The area planted to field peas will decline significantly after a disappointing harvest, in favour of increased canola plantings. The area planted to feed barley is expected to rise at the expense of malt varieties.

Soil moisture is very good after significant late March rain, although it is now generally too deep for reliable germination. Some canola has been planted and has established well.

Geraldton: The area sown to Canola will rise in the Geraldton zone, again at the expense of the area sown to lupins. Soil moisture is negligible and dry sowing will commence this week across the zone.

Disclaimer: The information herein has been obtained from sources considered reliable but its accuracy and completeness cannot be guaranteed. Any advice has been prepared without taking into account specific objectives, financial situation or needs. No liability or responsibility is accepted for any errors or for any negligence, omissions in the contents, default or lack of care for any loss or damage whatsoever that may arise from actions based on any material contained in this publication. Readers who act on this information do so at their own risk. Consult your adviser before making crop, marketing or investment decisions.

GIWA would like to acknowledge the support of DAFWA and contribution from industry consultants in the production of this report



Department of Agriculture and Food



Additional information can be sourced from:

- [BoM rainfall deciles for WA March 2012](#)
- [BoM rainfall deciles for WA January to March 2012](#)
- [DAFWA Statistical Seasonal forecast](#)
- [BoM- WA Seasonal Rainfall Outlook: probabilities for April to June 2012](#)
- [DAFWA Seasonal Update April 2012](#)

GIWA would like to acknowledge the support of DAFWA and contribution from industry consultants in the production of this report