



Department of
Agriculture and Food



GRDC Grains Research &
Development Corporation
Your GRDC working with you



Precision Farming Experience

Andrew Chambers - Ravensthorpe

Crop Updates February 2014



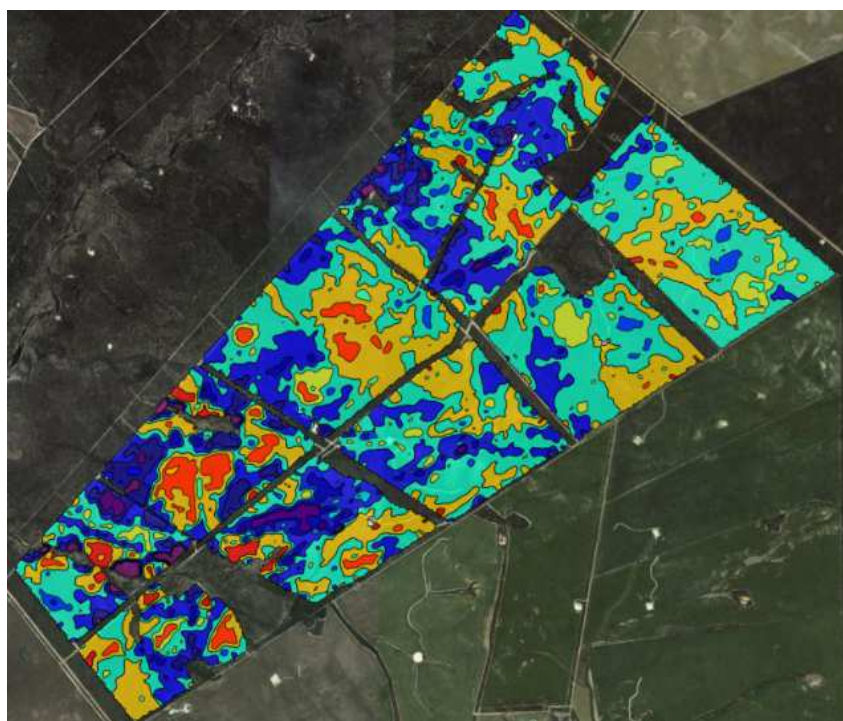


Department of
Agriculture and Food

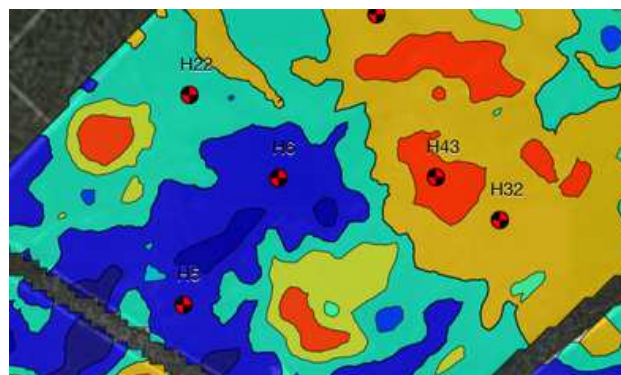
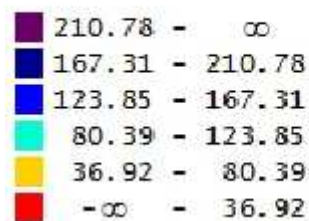


GRDC Grains Research &
Development Corporation
Your GRDC working with you

Soil Variability – Management Boundaries



EM 38 1.0m
(mS/m)



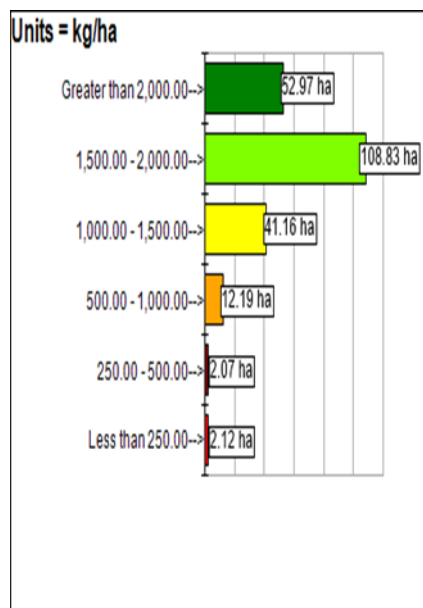
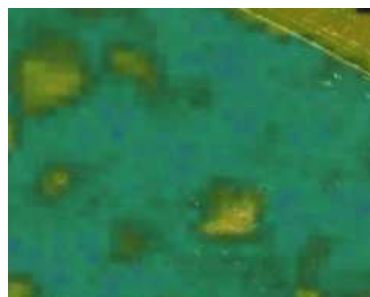
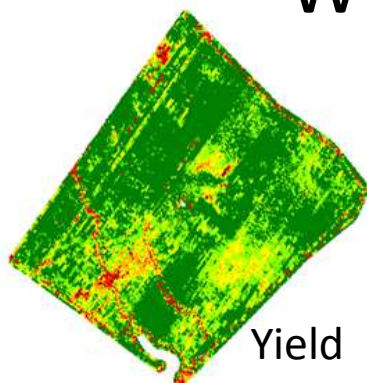


Department of
Agriculture and Food

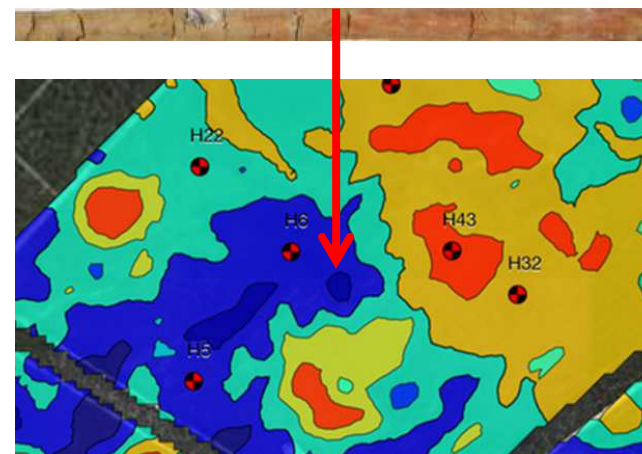


GRDC Grains Research &
Development Corporation
Your GRDC working with you

What is the Best Layer of info to use?



Own Knowledge
& Experience



Soil Surveys &
Cores



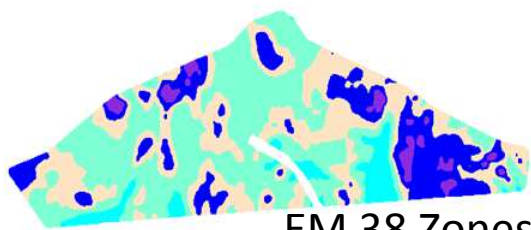


Department of
Agriculture and Food

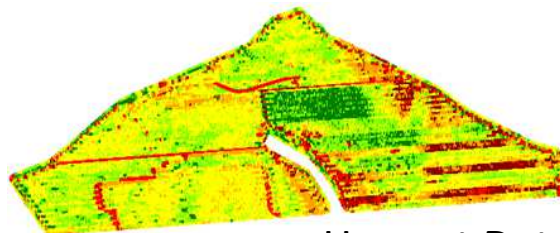


GRDC Grains Research &
Development Corporation
Your GRDC working with you

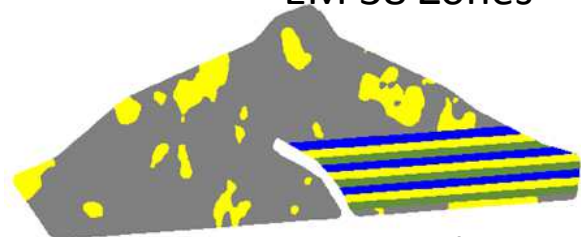
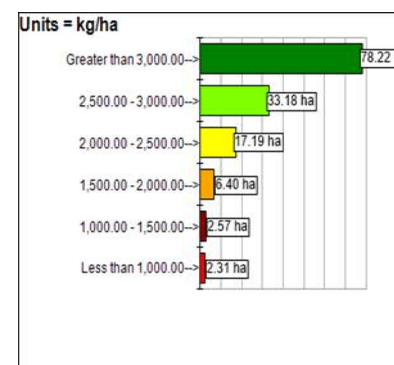
How am I sure I am doing the right thing? - Paddock Trial Work and VRT



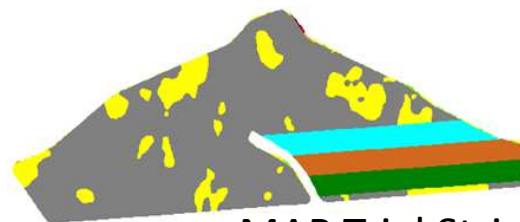
EM 38 Zones



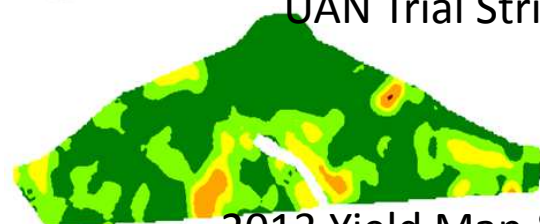
Harvest Data



UAN Trial Strips



MAP Trial Strips



2013 Yield Map & Yields



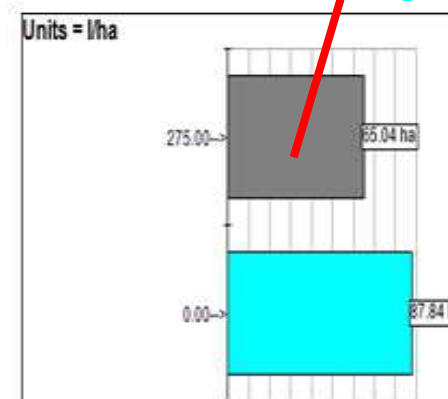
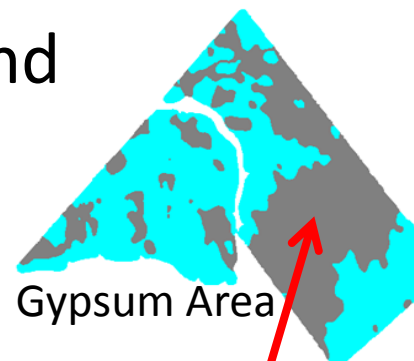
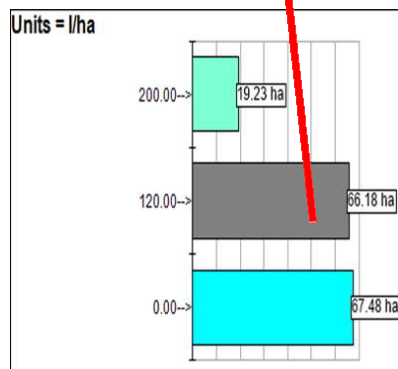
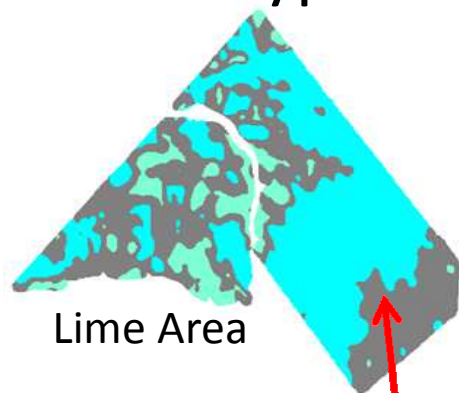


Department of
Agriculture and Food



GRDC Grains Research &
Development Corporation
Your GRDC working with you

Lime & Gypsum VRT - Start with the basics first – Have an outcome in mind



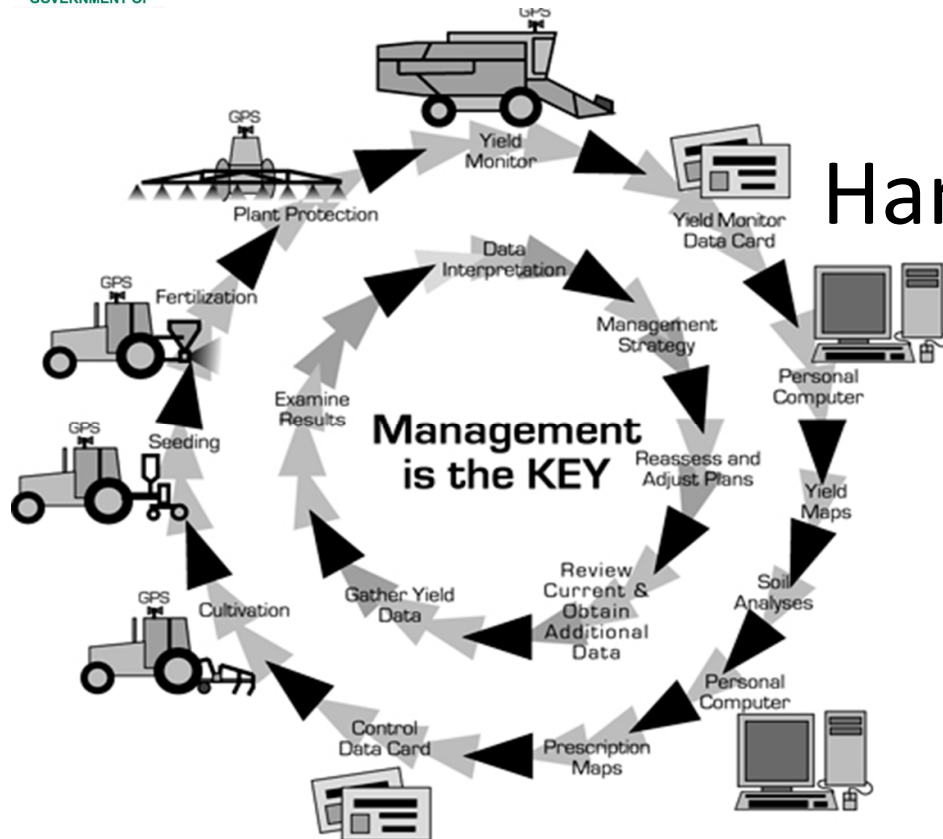


Department of
Agriculture and Food



GRDC Grains Research &
Development Corporation
Your GRDC working with you

PA Challenges - Hands On Or Hands Off??



Machinery/ Software Integration Challenges



Three key messages

Maps are essential if you are not in the field.

Most of our savings have been in lime and gypsum.

Rain will create variable results in different years so what you did last year may win or lose you money the next.





Department of
Agriculture and Food



GRDC Grains Research &
Development Corporation
Your GRDC working with you

Questions?

Andrew Chambers

0429 38 0084

