



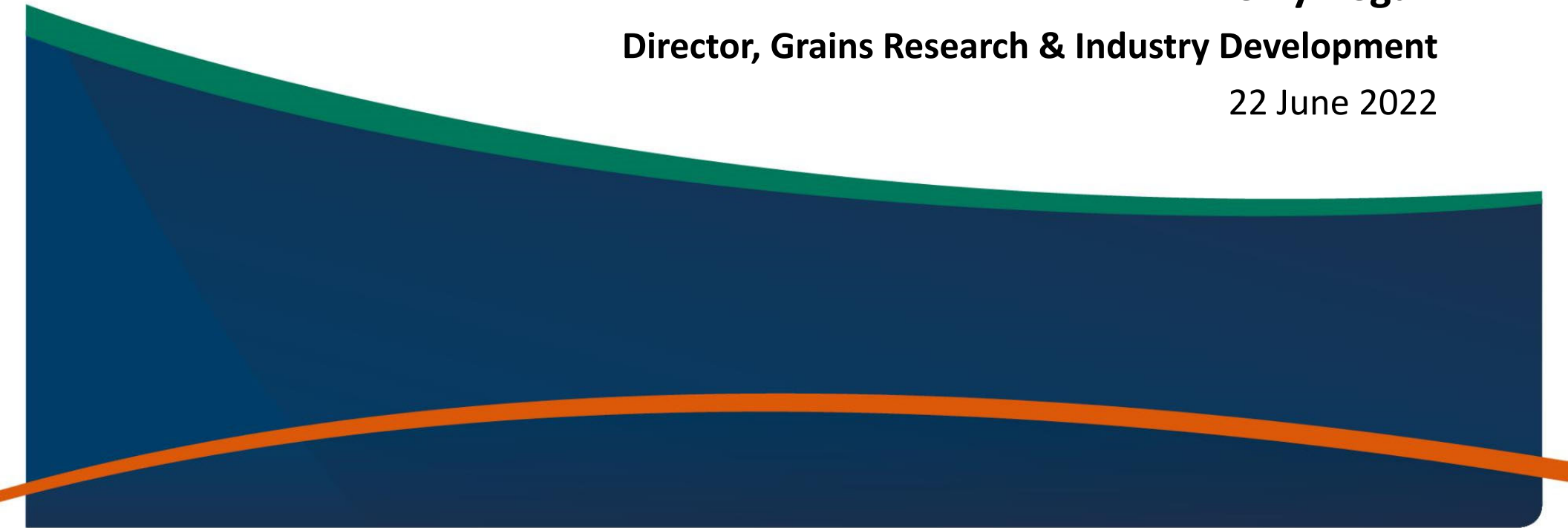
Department of
**Primary Industries and
Regional Development**

GIWA Pulse Forum

Kerry Regan

Director, Grains Research & Industry Development

22 June 2022



Investment

RESEARCH PARTNERSHIPS

Grains R&D delivery and impact is enhanced through partnerships and collaboration:

Investments in InterGrain and AEGIC with GRDC

AGT licensed to commercially develop DAFWA and GRDC's jointly owned lupin breeding germplasm

Support for industry groups GIWA and GGA

Alliances with universities: Western Crop Genetics Alliance (Murdoch University), SoilsWest (Murdoch University)

Research project collaboration (CSIRO, universities, state agencies, grower groups, commercial)



Our Priority R&D

MISSIONS 2022-2026



Our priorities include:

- 1 Reengineered soils for evolving farming systems
- 2 Early monitoring and tactical management of pests and diseases
- 3 Partnerships in oats and lupins to support industry growth
- 4 Western Farming Systems initiative to increase whole farm profitability, reduce risk and increase adoption of agronomic and system innovations
- 5 Transform the WA Grains Industry to achieve an ave. 25 million tonne crop/annum by 2035, achieved with 50% less fertiliser, crop protection and fuel inputs per unit of output compared to 2022

Western Australian Agricultural Research Collaboration
\$25 million commitment from State Government for 3
years from 2022/23 to 2024/25

Six missions:

- 1. Northern Agriculture**
- 2. Grains Transformation**
- 3. Climate Resilience**
- 4. Agricultural Technologies**
- 5. Aboriginal Participation**
- 6. Capacity Building**

TeamWA approach to develop longer term collaborative research programs with researchers, industry, growers and external funding bodies



Collaboration with DPIRD, CSIRO, the University of WA, Edith Cowan, Curtin and Murdoch Universities

GIWA Pulse Forum

INDUSTRY COLLABORATION



Merredin 2003

Thank you

3

5